

Franciszka Themerson

Lines and Thoughts

4 November 2016 – 16 December 2016

l'étrangère

London

It seemed to me that the interrelation between these two sides: order in nature on the one side, and the human condition on the other, was the undefinable drama to be grasped, dealt with and communicated by me.

– Franciszka Themerson, *Bi-abstract Pictures*, 1957

l'étrangère in London presents a solo exhibition of paintings, drawings and calligrammes by Franciszka Themerson – a seminal figure in the Polish pre-war avant-garde. She developed her unique pictorial language during the shifting years of pre- and post-war Europe, having settled in Britain in 1943. Together with her husband, writer, poet and filmmaker, Stefan Themerson, she was involved with experimental film and avant-garde publishing. Her personal domain, however, focused on painting, drawing, theatre sets and costume design.

This exhibition brings together Franciszka's three paintings completed in 1972 and a selection of drawings, dated from 1955 to 1986, which demonstrate the breadth of her work.

The paintings: *Piétons Apocalypse*, *A Person I Know* and *Coil Totem*, act as anchors in the exhibition, while the drawings demonstrate the variety of motifs recurring throughout her work. The act of drawing and the key role of the line remain a constant throughout her practice. The images are characterised by a fluidity of line, rhythmic composition and the humorous depiction of everyday life. She was instinctively drawn to the contrast of extremes: abstraction and figuration, order and disorder, comedy and tragedy.

More information: www.letrangere.net

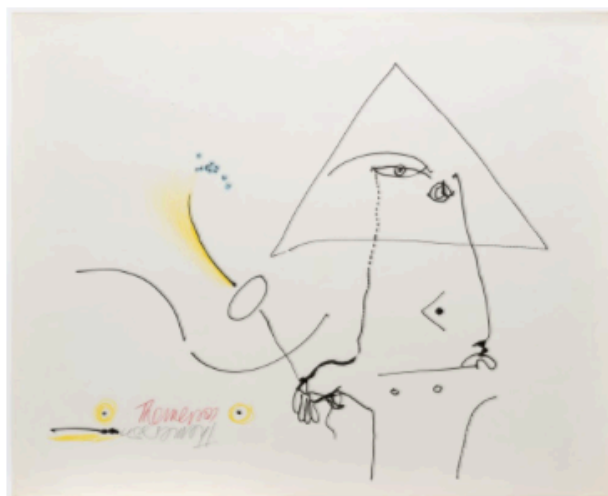
This exhibition brings together Franciszka's three paintings completed in 1972 and a selection of drawings, dated from 1955 to 1986, which demonstrate the breadth of her work.

The paintings: *Piétons Apocalypse*, *A Person I Know* and *Coil Totem*, act as anchors in the exhibition, while the drawings demonstrate the variety of motifs recurring throughout her work. The act of drawing and the key role of the line remain a constant throughout her practice. The images are characterised by a fluidity of line, rhythmic composition and the humorous depiction of everyday life. She was instinctively drawn to the contrast of extremes: abstraction and figuration, order and disorder, comedy and tragedy.

More information: www.letrangere.net



Calligramme XXA (perspective), 1961



Man with Trianale and Blue Spots, c. 1977